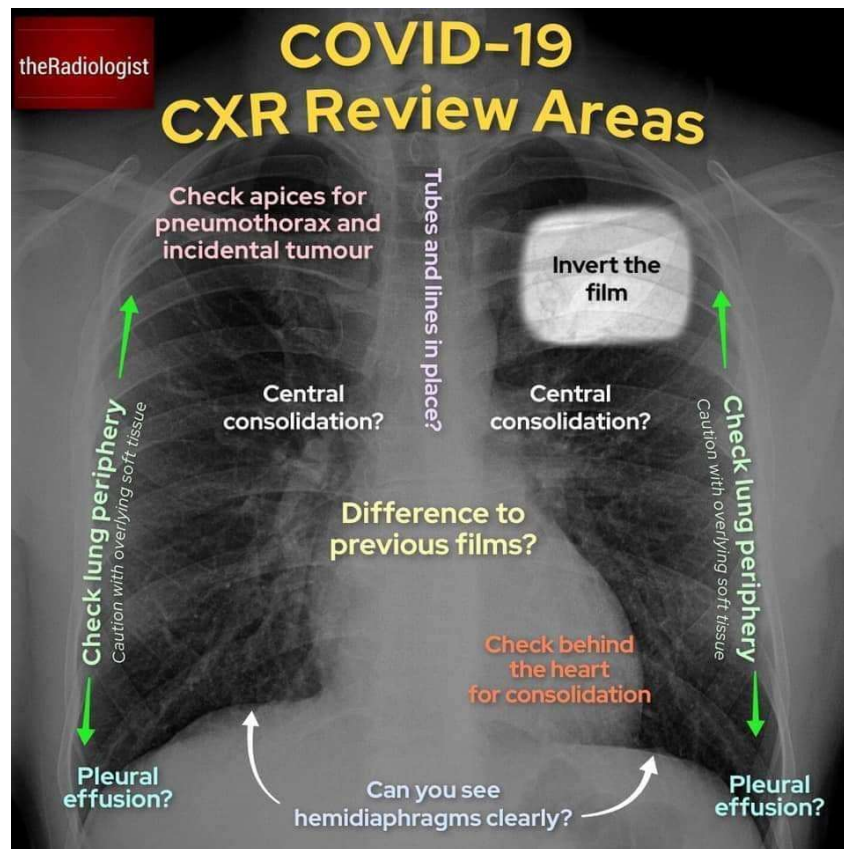
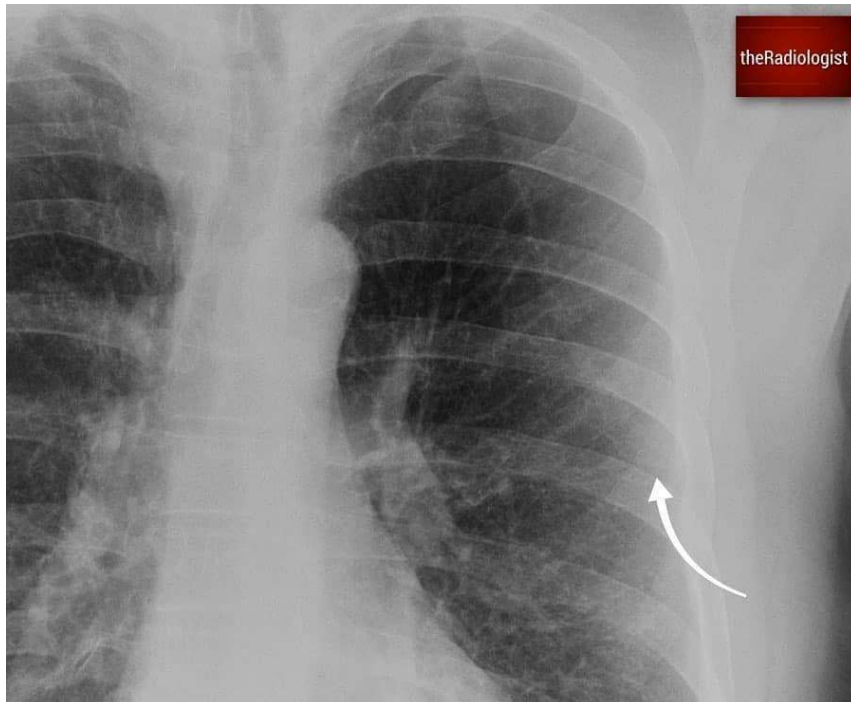
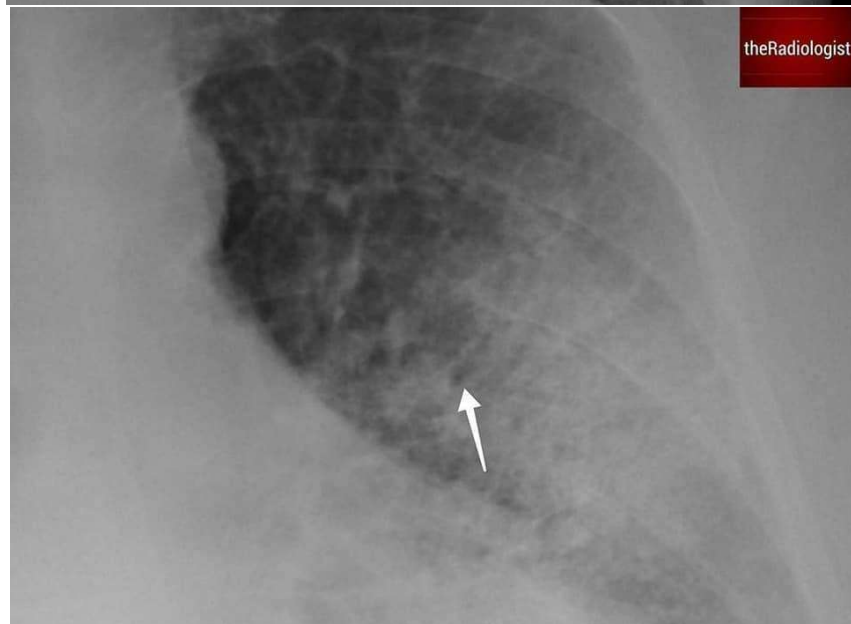


Coronavirus COVID-19: Chest X-Ray and CT Interpretation





If we look at the periphery of the left lung we can see inferior border of the scapula here...



Look at these small lucencies within the opacification - these are 'air bronchograms'

This means we can definitely call this consolidation

LEARNING POINTS

Carefully assess CXRs for peripheral consolidation during the COVID-19 pandemic

Remember COVID-19 can present as abdominal pain

theRadiologist

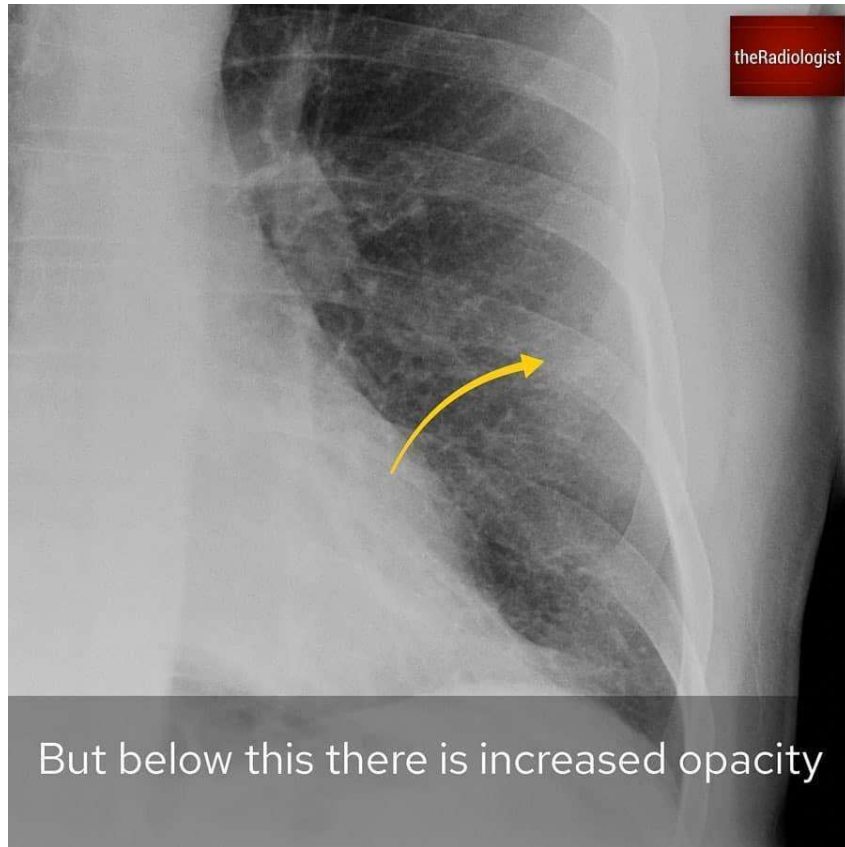


theRadiologist

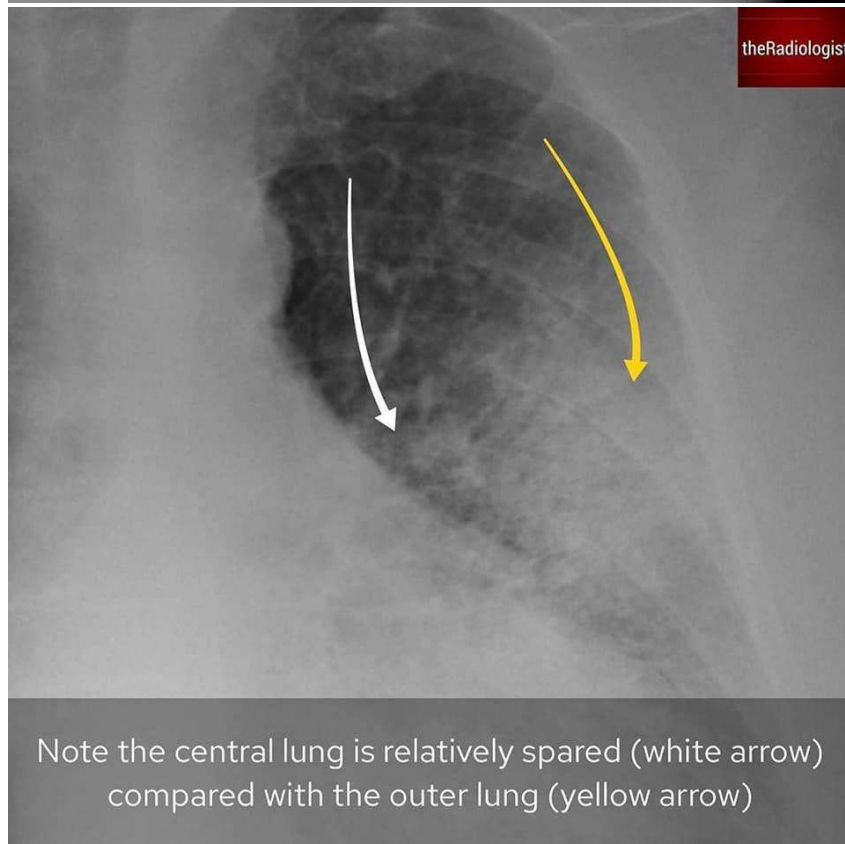
Cough and fever

Diagnosis?

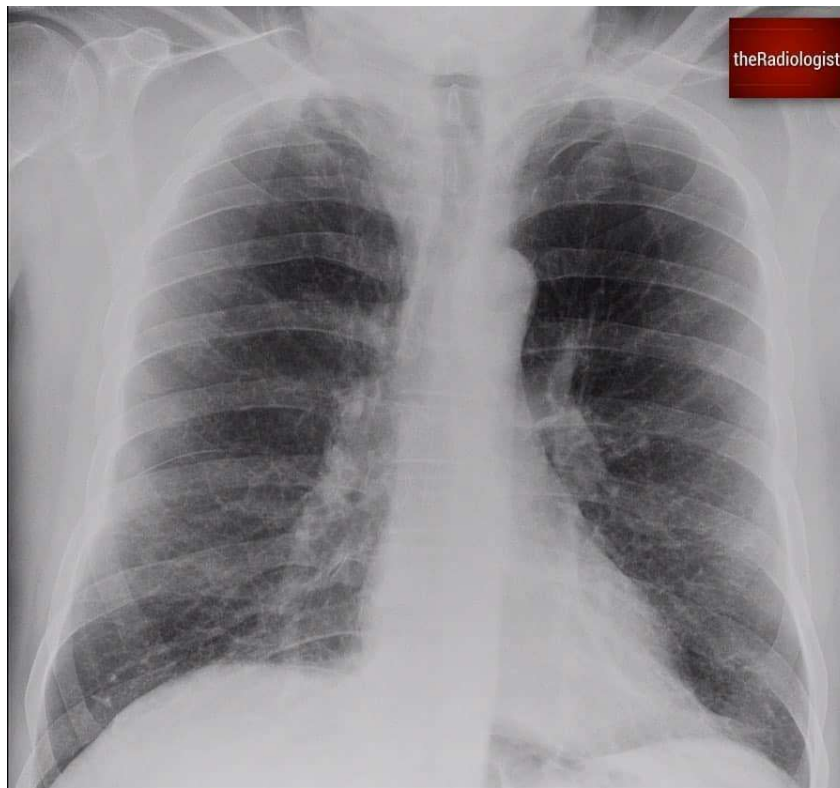
Swipe for explanation



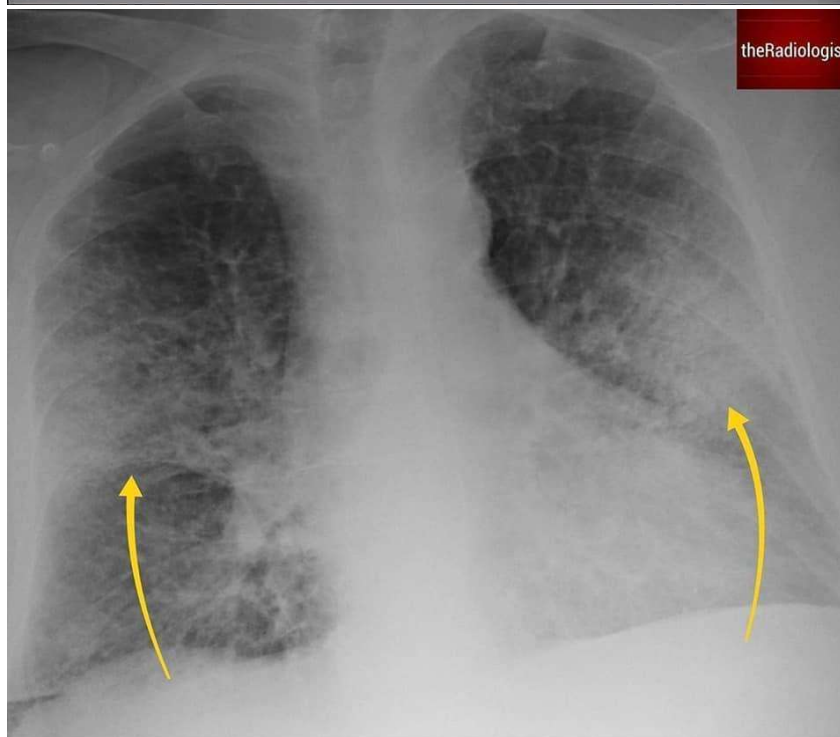
But below this there is increased opacity



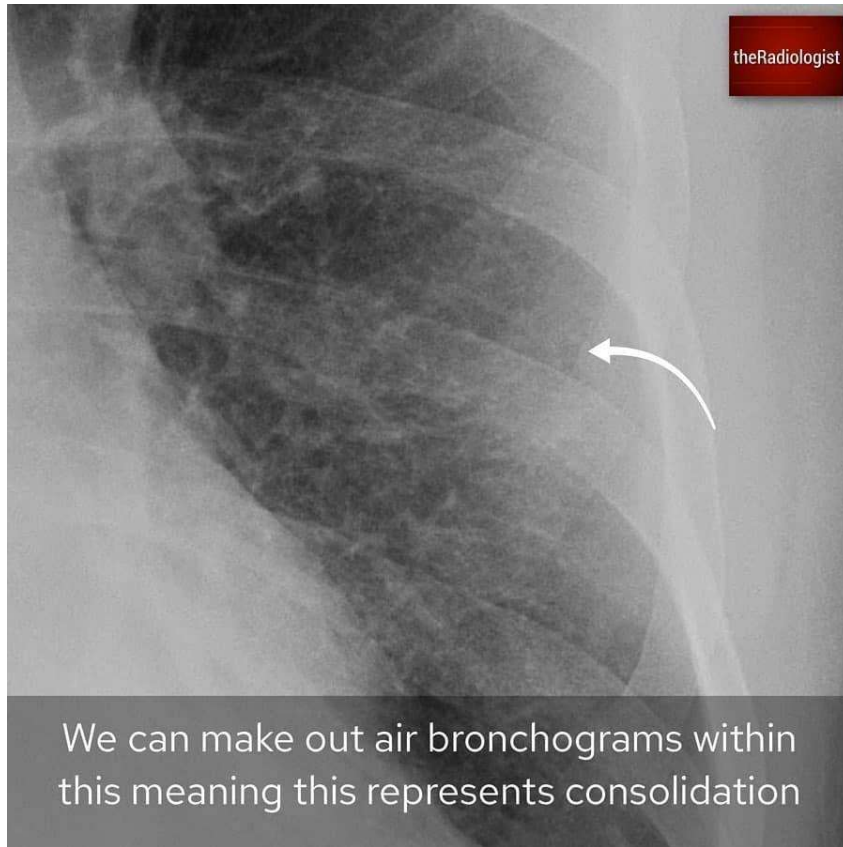
Note the central lung is relatively spared (white arrow) compared with the outer lung (yellow arrow)



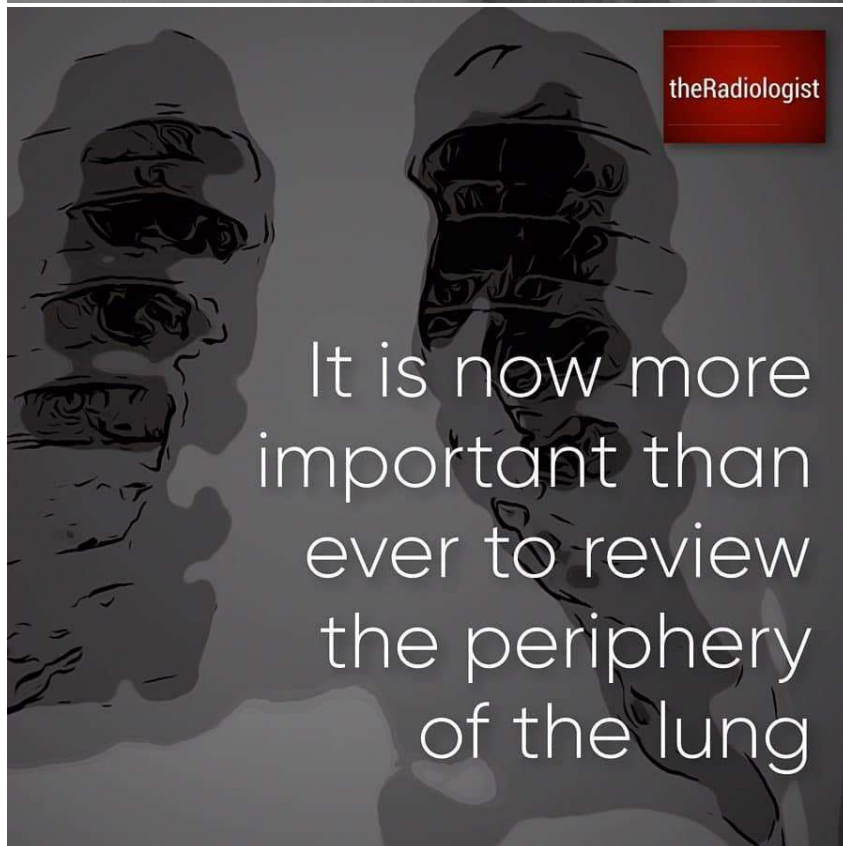
Severe abdominal pain Diagnosis? Swipe for explanation



There is bilateral peripheral opacification



We can make out air bronchograms within this meaning this represents consolidation



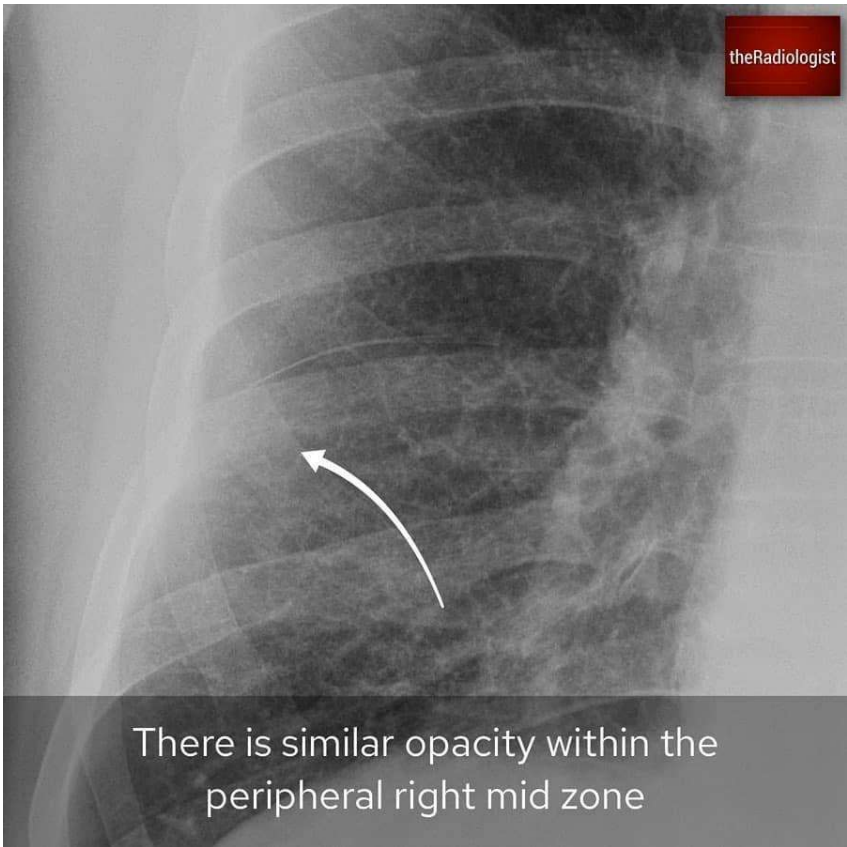
It is now more important than ever to review the periphery of the lung



theRadiologist

Bilateral peripheral
consolidation should now
make you consider

COVID-19

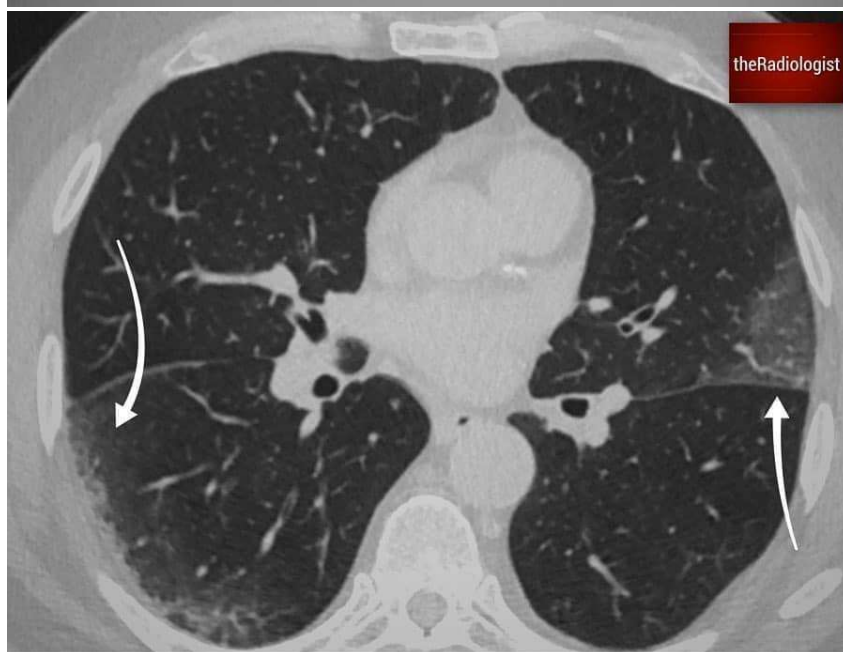


theRadiologist

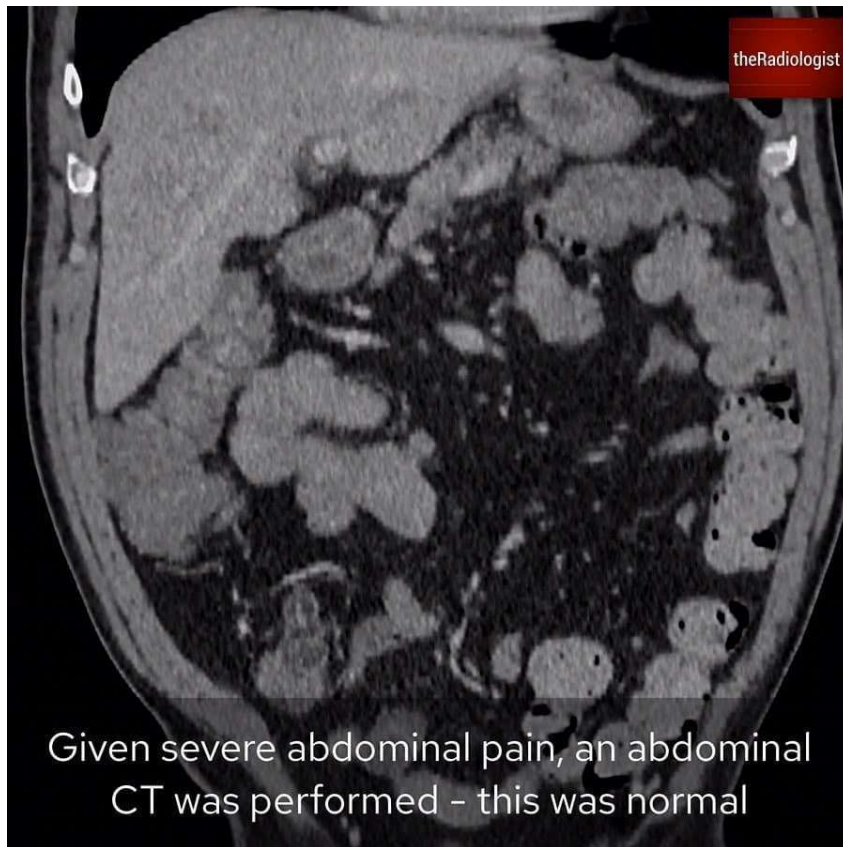
There is similar opacity within the
peripheral right mid zone



Bilateral peripheral consolidation should make you consider COVID-19 infection



Chest CT confirms the Chest X-Ray abnormality - there is bilateral peripheral ground-glass opacity characteristic of COVID-19



Given severe abdominal pain, an abdominal CT was performed - this was normal